



# **Account Recovery in Anchor**

**Guide for Anchor on Desktop**



# Account Recovery in Anchor

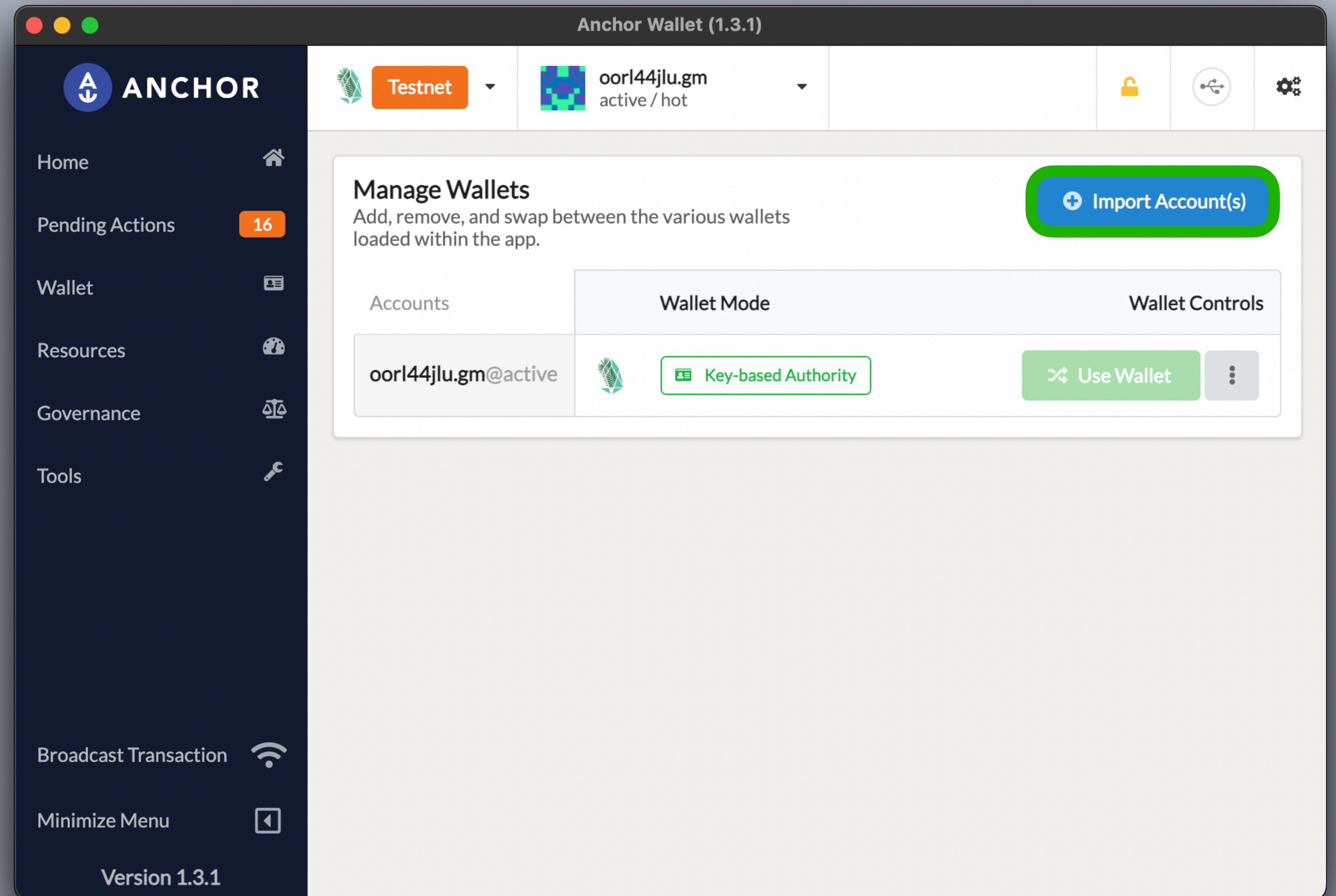
Last updated 2022.06.21 - support@greymass.com

## Step 1 - Add Account

Recovery is the primary and preferred method to bring an account into Anchor.

This process makes use of Anchor's Owner Key Certificate, which is the offline and encrypted owner key of your account. This feature allows you to keep your key safe and secure using physical security. We also allow you to save your Owner Key Certificate as a PDF for digital storage options.

To begin the account recovery process, select **"Manage Wallets"** and then **"Import Account(s)"**







# Account Recovery in Anchor

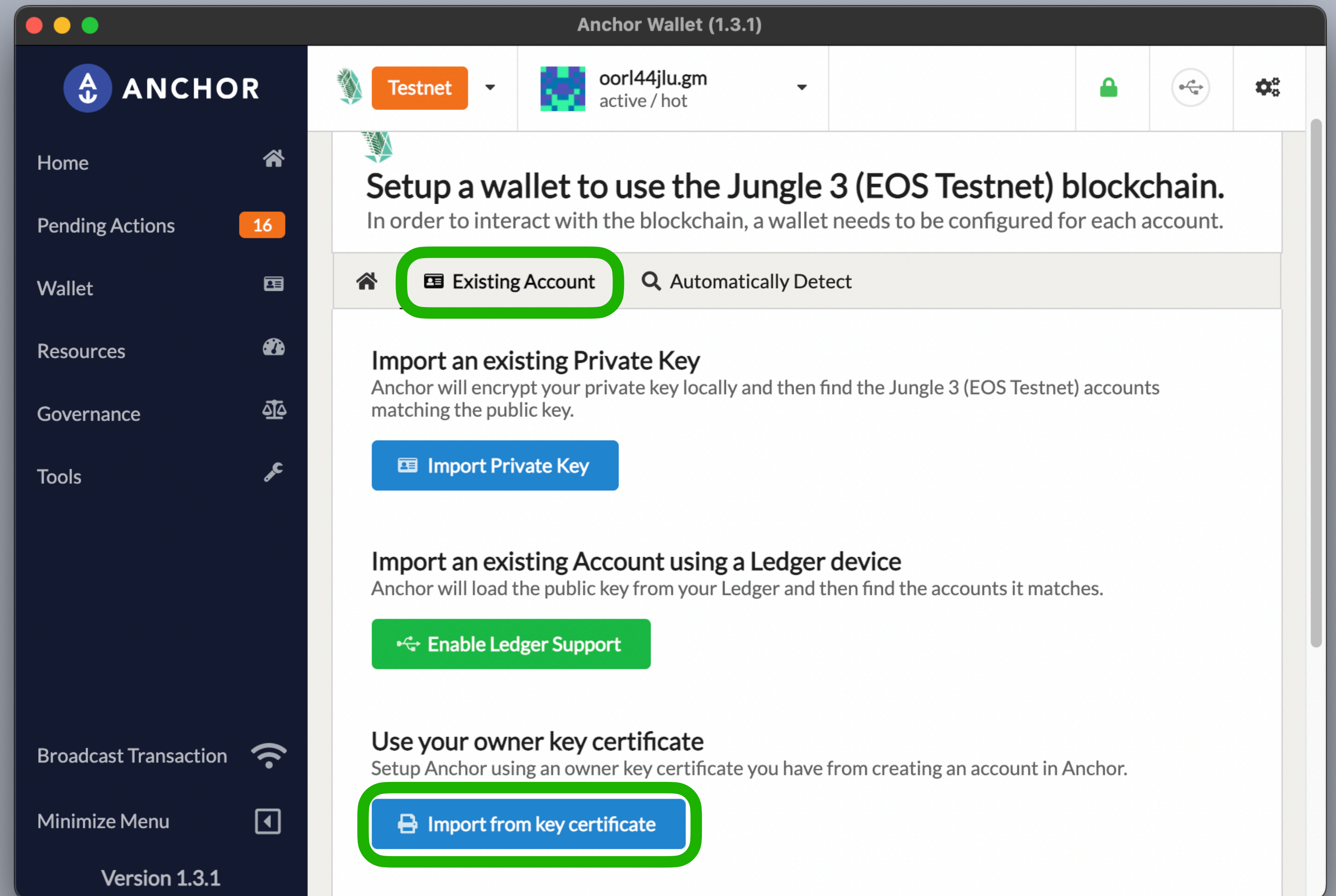
Last updated 2022.06.21 - [support@greymass.com](mailto:support@greymass.com)

## Step 2 - Import from Key Certificate

In order to add your account via the Account Recovery method you will need to have your Owner Key Certificate at the ready.

Make sure that the 6 words are clearly written at the bottom of the page. Take note of the exact spelling and order in which the words are listed, as they are critical to this process.

To continue, select “Existing Account” then “Import from Key Certificate”







# Account Recovery in Anchor

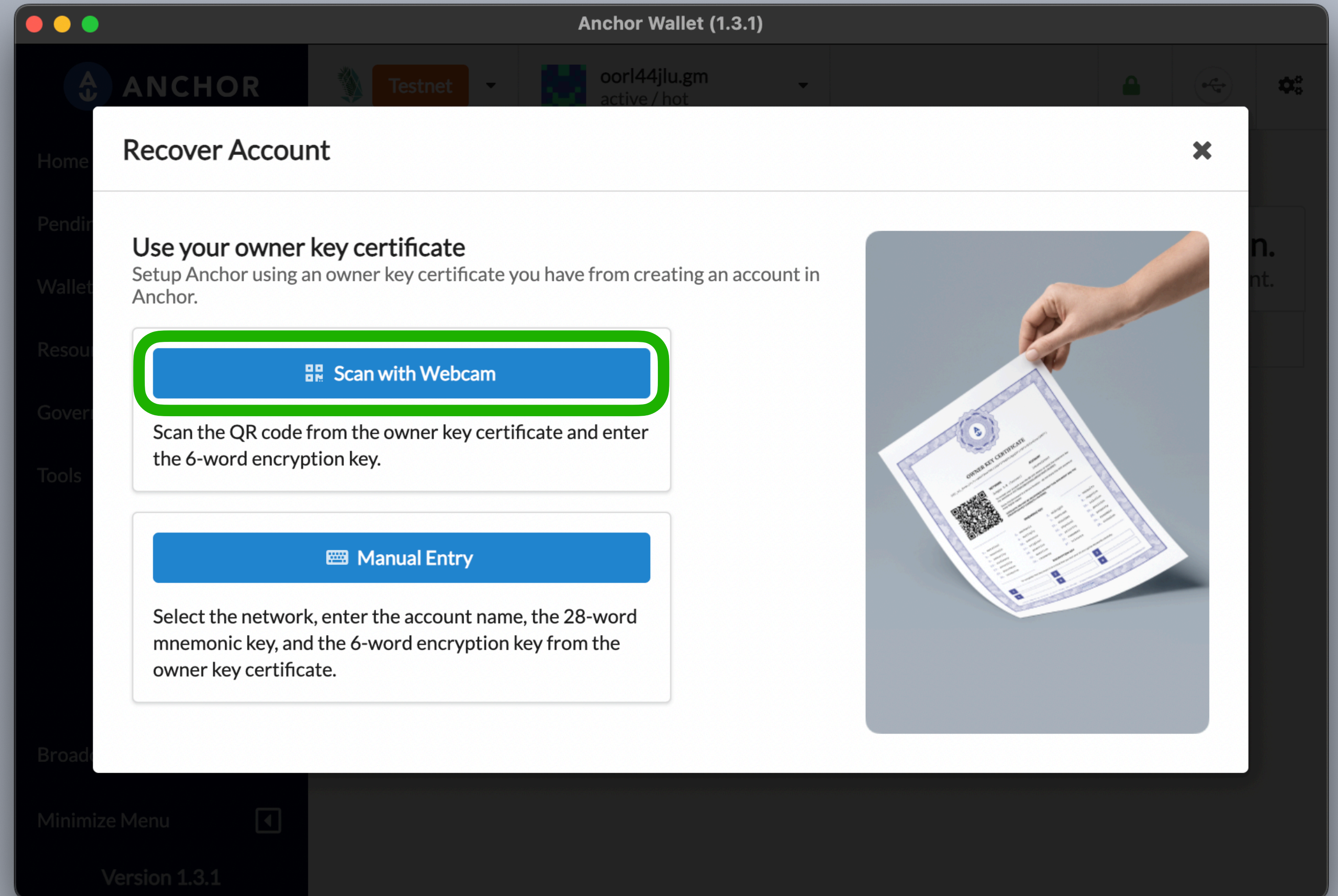
Last updated 2022.06.21 - support@greymass.com

## Step 3 - Scan Owner Key Certificate

There are two methods to use Account Recovery. This guide covers the QR code method, which requires your desktop to have a webcam.

If you do not have a webcam available for your desktop or if you'd prefer to enter the data from the Owner Key Certificate manually, please see the following guide [here](#).

To continue, select **"Scan with Webcam"**







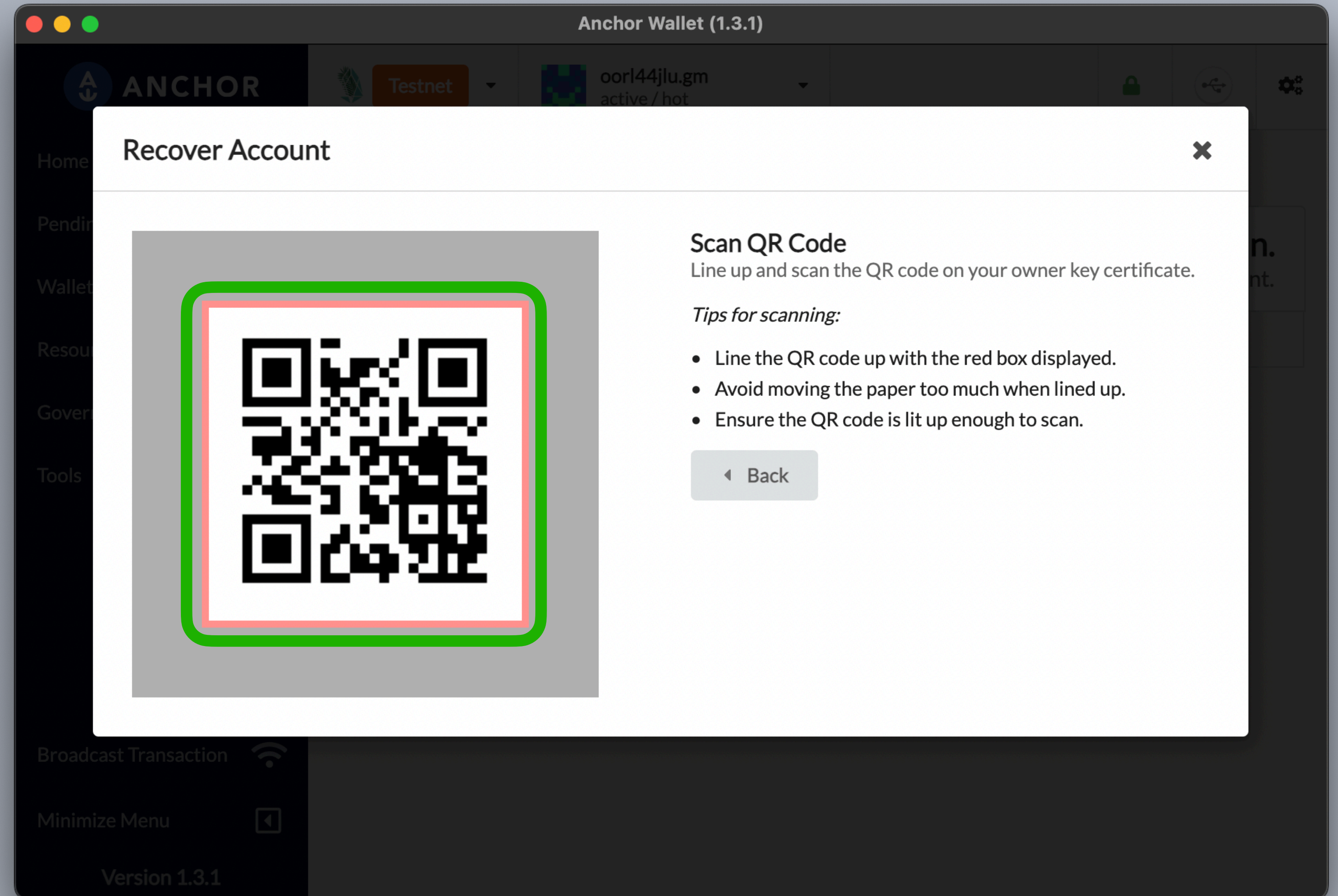
# Account Recovery in Anchor

Last updated 2022.06.21 - support@greymass.com

## Step 4 - Scan QR

You should see the webcam preview on the left side. Hold your Owner Key Certificate up to the webcam and make sure to line up the corners of your QR code with the preview window guide.

Once your QR code has scanned successfully, you will be advanced to the next page automatically.







# Account Recovery in Anchor

Last updated 2022.06.21 - support@greymass.com

## Step 5 - Enter 6 word Encryption Key

In this step, you'll be prompted to enter the 6 words that were written at the bottom of the Owner Key Certificate. Again, be sure to check the spelling and make sure you're added the words in the correct order.

If the words were entered correctly, the “Continue” button should light up and you can click it to move along.

Anchor Wallet (1.3.1)

ANCHOR Testnet oorl44jlu.gm active / hot

### Recover Account

Enter Encryption Key  
Enter the 6 words as displayed labeld as ENCRYPTION KEY from your owner key certificate.

Encryption Key

1	weapon	2	horror	3	fan
4	reform	5	album	6	return

Continue

Clear all words

Go back to start and try again





# Account Recovery in Anchor

Last updated 2022.06.21 - support@greymass.com

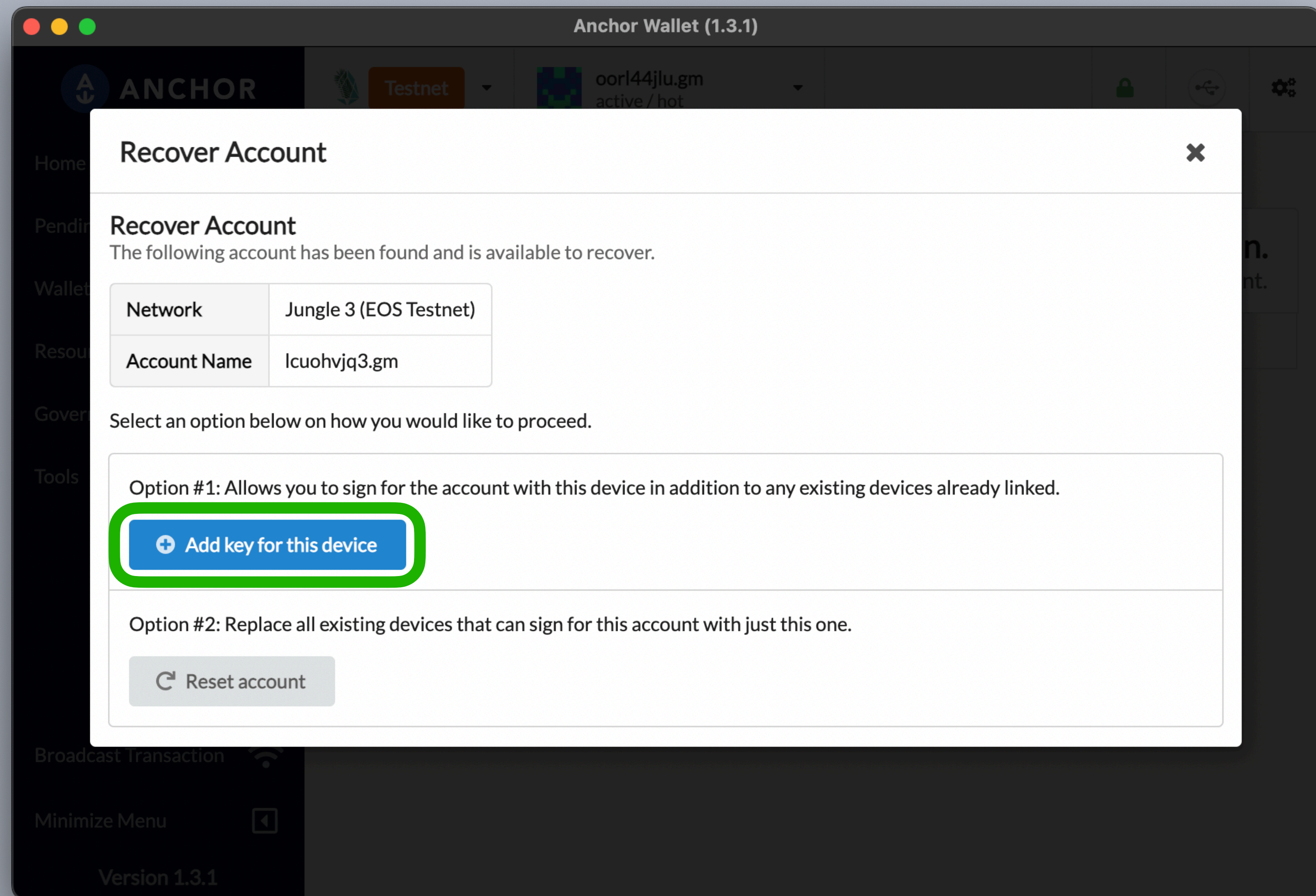
## Step 6 - Account Keys

This page presents the general information of your account and allows you to add or reset the keys of your account. Before moving forward, take time to verify that the account name and network displayed correctly represent the account you are intending to add into Anchor

In order to allow your device to make changes to your account, you will need to add a key to your account on the blockchain. You have two choices here

- Add Keys - This will add a single key to your account from that will authorize changes to your account from the specific device that you're using Anchor with
- Reset Keys - This will remove all keys from your account and replace them with a single key authorizing the specific device you're using Anchor with

For our example today, we'll be using "Add key for this device"







# Account Recovery in Anchor

Last updated 2022.06.21 - support@greymass.com

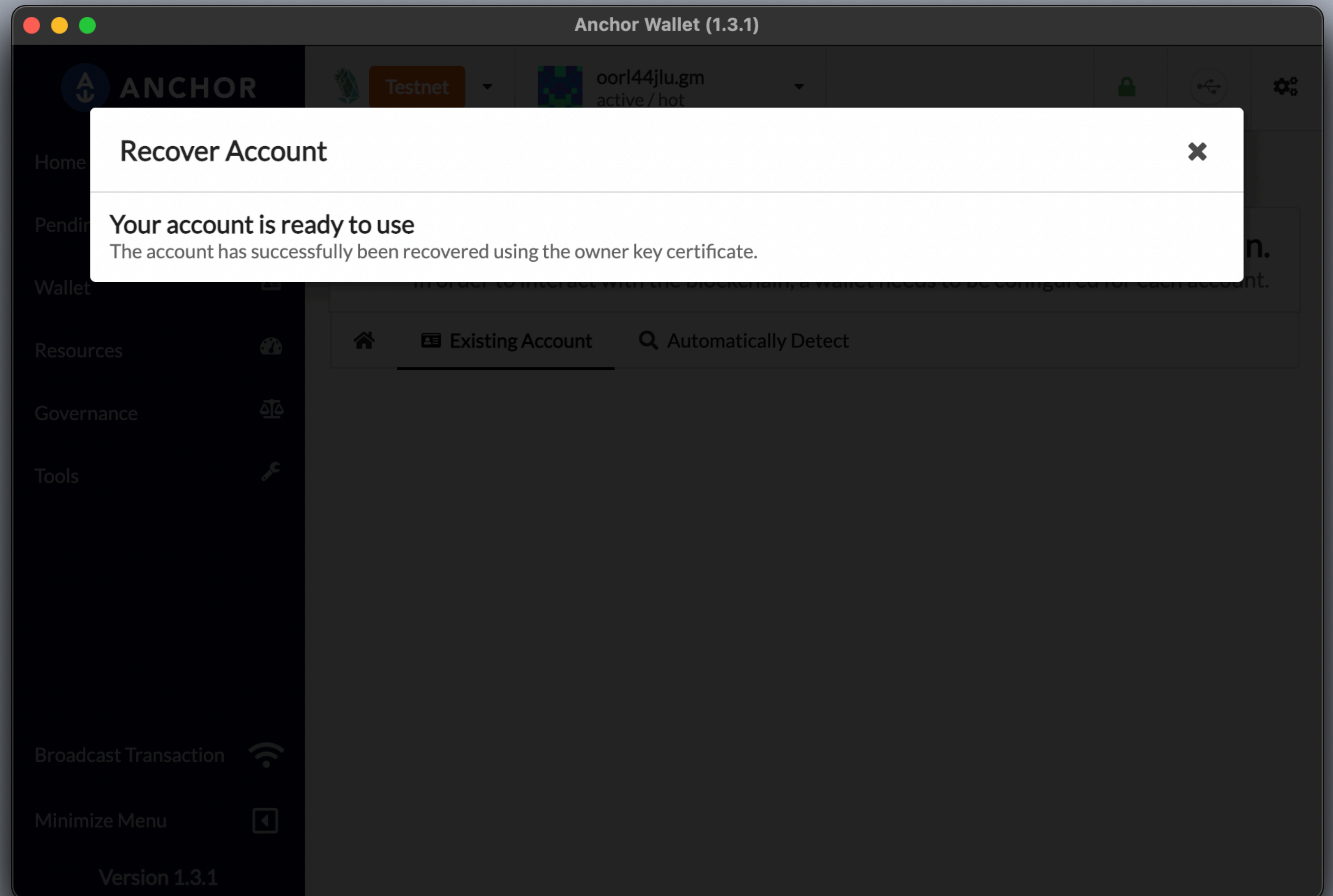
## Step 7 - Authorize and Verify

At this stage, you'll be asked to enter your Anchor password to authorize your key preference from the previous screen.

Once you've entered your password and clicked "**Authorize**", you'll see the Anchor verifying the account update. You can click "Skip" if you'd like, which will take you directly to the Home Dashboard, however, you will be limited in functionality until the verification process has completed.

Once complete, you'll be returned to the Home Dashboard and should be free to use your account as needed!

If you have any additional questions, please reach out via our [Support Portal](#) or at [support@greymass.com](mailto:support@greymass.com).







**Greymass**

**You have Successfully  
completed the guide**

**[support@greymass.com](mailto:support@greymass.com)**